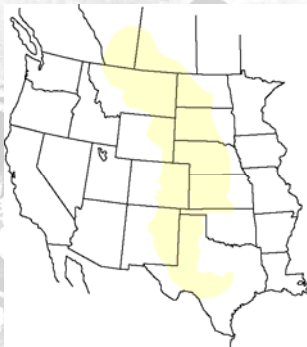




FRONTIER – unsettled or sparsely settled area of the country largely occupied by Native Americans

GREAT PLAINS – area from the Missouri River to the Rocky Mountains

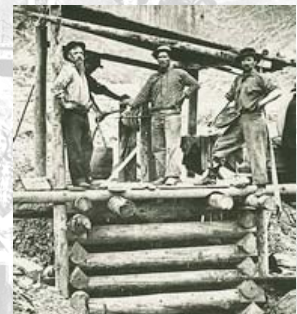


Mid 1800's on the Great Plains there are basically no trees and 300,000 Native Americans

Railroads bring settlement to the frontier – supplies, people, etc.



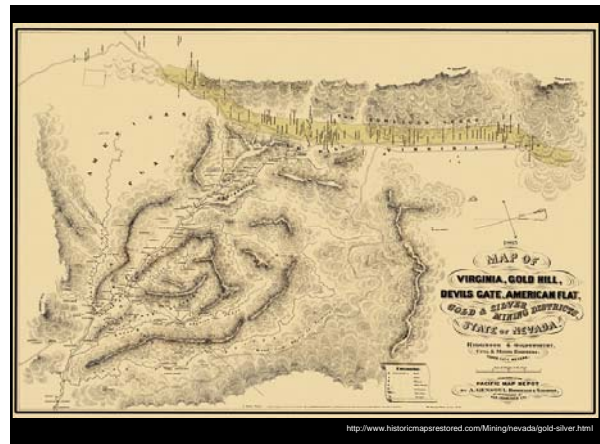
Silver and gold are found in Colorado and Nevada in 1859



The COMSTOCK LODGE found in western Nevada produces over \$300,000,000 worth of gold and silver between 1859 and 1880



<http://contentdm.library.utn.edu/cgi-bin/thumbnail.exe?CISOROOT=/photos&CISOPTR=23>



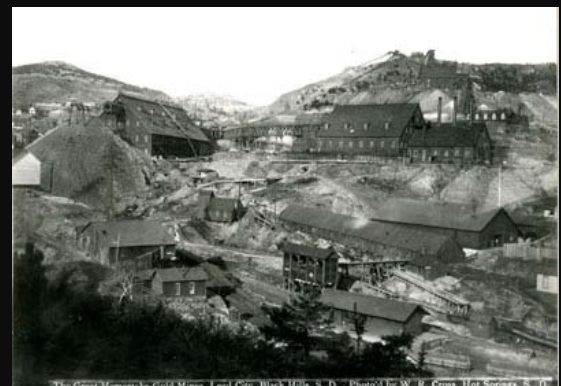
<http://www.historicmapstore.com/miningnevada/gold-silver.html>

Gold found in Black Hills of South Dakota in 1874

Gold found in Cripple Creek, Colorado in 1891



<http://www.dakotamatrix.com/images/home/643MINERS.JPG>



The Great Homestake Gold Mines, Lead City, Black Hills, S. D. - Photo'd by W. R. Crown, Hot Springs, S. D.

<http://www.homestake-tour.com/gallery-3.html>

1896 gold was found in Yukon Territory in Canada



<http://www.dawsoncity.ca/uploads/2B/3C/2B3C0uT4JUFBRF-cwmuA-s016944.jpg>


Raising cattle in the west was limited to only local buyers

Could not get the cattle to larger cities for sale to masses

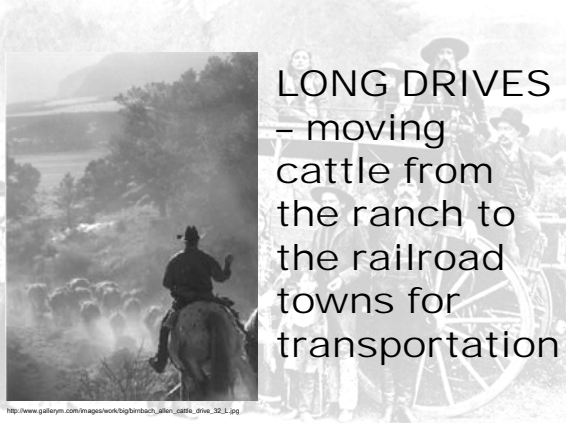


http://www.cicattle.com/images/ranch_history/history3.jpg

Ranchers start “driving” cattle to railroad towns – Abilene, Kansas



http://www.southcentral.net/teefoundation/Western_art/Roundup.jpg



LONG DRIVES
– moving
cattle from
the ranch to
the railroad
towns for
transportation

http://www.galerym.com/images/work/big/bimbach_silver_cattle_drive_32_1.jpg



West becomes known as the “Wild West” where people take the law into their own hands

People protect each other with VIGILANTES - groups of people who take the law into their own hands

People are usually punished without a trial




The background of the slide is a faded, historical photograph showing a group of men, some on horseback and some on foot, dressed in period clothing. In the foreground, a man is being restrained by others. Overlaid on the right side of the slide is a smaller, rectangular, sepia-toned photograph depicting a public execution by hanging. A gallows stands on a hillside, with a person hanging from it. Another person is visible on a horse in the foreground, and a crowd of people is gathered in the background.

<http://www.kipmillerphoto.com/photos/oldwest/C&W/execution/275.jpg>

A sepia-toned photograph showing a man on a horse in the foreground, looking towards the right. In the background, another man is hanging from a tall, bare tree trunk. The scene is set in a hilly, open landscape under a bright sky.

Railroads expand to more towns and soon there is no more need for the “Long Drives”



The image features a historical scene. In the foreground, two men in 19th-century attire stand on the left. The man on the left wears a dark coat and a wide-brimmed hat, holding a rifle. The man on the right wears a dark coat and a top hat, holding a cane. In the background, a steam locomotive with a tall smokestack is pulling a passenger car along a track that curves through a hilly, wooded landscape. The sky is overcast. The image is a composite, with the text overlaid on the top half and the photograph on the bottom half.

<http://www.immuseumpa.org/about/musviews/football.jpg>

